



Interior View



Interior Elevations

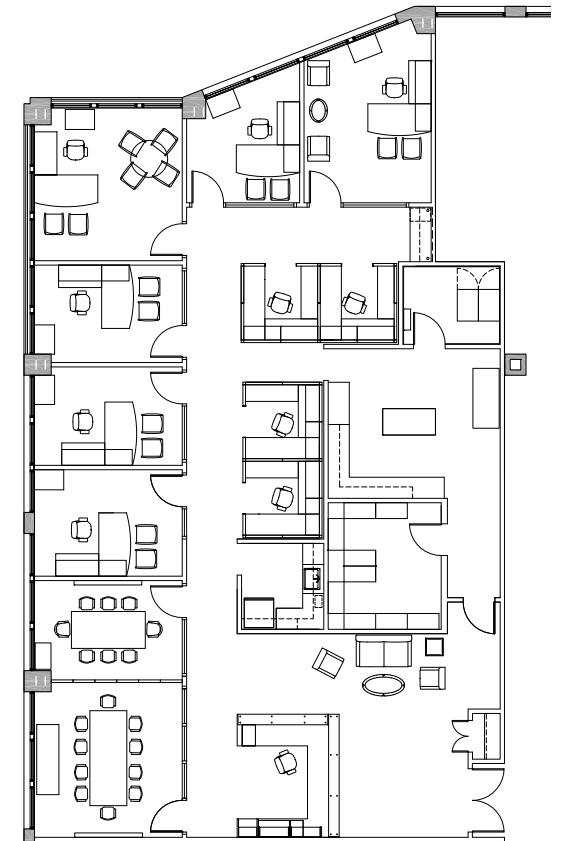


Proposed Reception Plan



Interior Design

We performed two separate 5,000 sf tenant improvement projects for BNY|Mellon Private Wealth Management offices in both Providence and West Hartford. The goal was to create an attractive, professional, welcoming environment where clients feel reassured by the stability and brand confidence of BNY|Mellon. Both offices are laid out with a mixture of perimeter offices and inboard open workstations. Careful attention was made to create acoustically private spaces to respect client confidentiality.



Proposed Plan