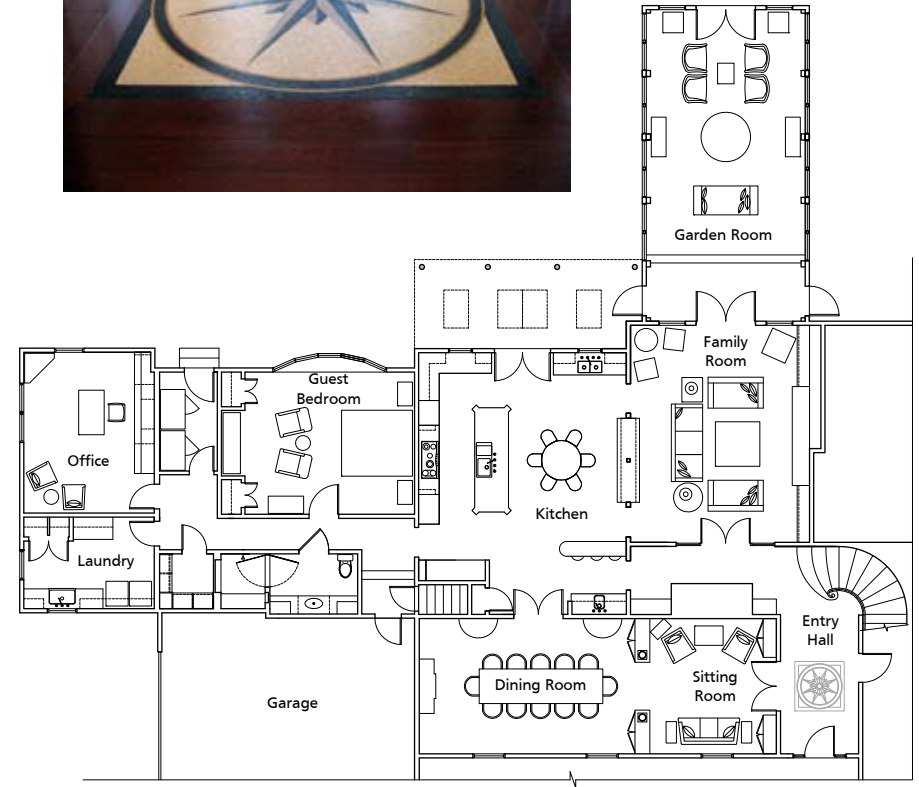


Interior Design

A 5,500 sf existing house in Swansea, MA, we were asked to provide an interior design solution that integrated the original house with a 2,500 sf addition and renovation. The new interiors provide family oriented living spaces and complement the social lifestyles of a 5 person family. This was achieved by creating an open floor plan between the kitchen and family room and strategically placing French doors between other spaces to provide privacy when necessary.



Partial First Floor Plan

Swansea, MA House